

## Primitive Annie Rag Doll Facial Feature Transference Tutorial

### Supply List

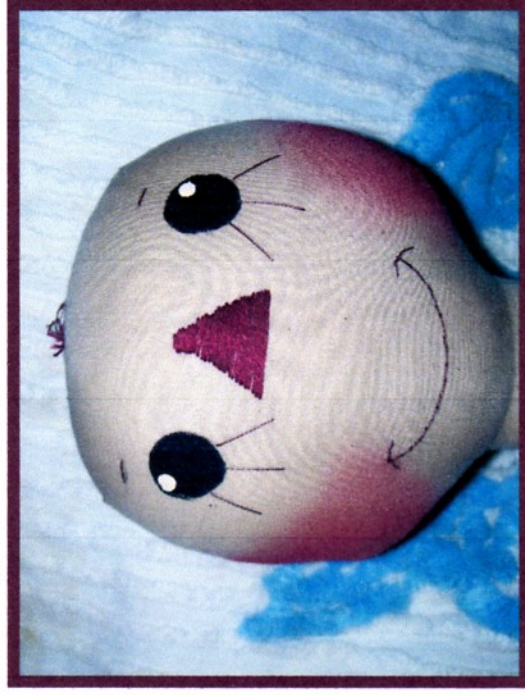
Embroidery Floss –  
Dark Brown #839  
Red #221  
Acrylic Paint –  
Black  
Antique White  
FolkArt Barnyard Red  
Hard Plastic or Wood Ruler  
Flexible Ruler  
Mechanical Pencil  
Cardstock  
Scissors  
Small Paint Brush  
Medium Stencil Brush  
Doll Needle 5-inch  
Small Embroidery Needle  
Paper Plates  
Paper Towels

## Lillie Mae's Crafts

Charming & Winsome Raggedy Annie Rag Doll Patterns  
Primitive, Vintage & Whimsical Craft Patterns & Designs  
Muncie, IN USA 765-288-0611  
E-Mail - [lilliemascrafts@lilliemascrafts.com](mailto:lilliemascrafts@lilliemascrafts.com)

Lillie Mae's Crafts - <http://www.lilliemascrafts.com>

## Primitive Annie Rag Doll Facial Feature Transference Tutorial



## Lillie Mae's Crafts

"Charming & Winsome Raggedy Annie Rag Doll Patterns"



# Lillie Mae's Crafts

A Lillie Mae's Crafts original design by Brenda Greenwalt

Primitive Annie Rag Doll Facial Feature Transference Tutorial  
Read through all directions before beginning.

## Introduction

I had a terrible time with the facial features on my very first primitive doll. After that I started to dread it when it came time to do the face; but I absolutely loved every other aspect of primitive doll making. So I experimented with several different methods and I finally came up with an idea that made working on the face, for me, actually enjoyable. Now not only do I no longer dread the time to embroider the nose or paint the eyes, I actually sincerely love that part of primitive doll making. I hope this very simple and very easy method works as well for you as it has for me.

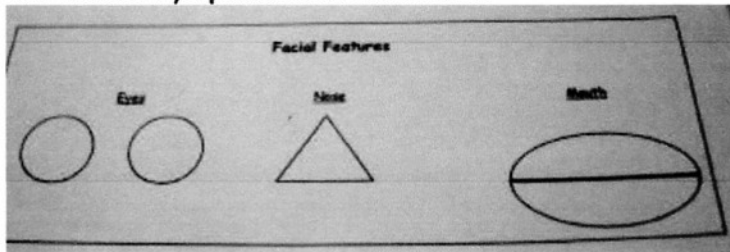
## Supplies:

- Dark Brown Embroidery Floss #839
- Red Embroidery Floss #221
- Acrylic Paint
  - Black
  - Antique white
  - FolkArt Barnyard Red acrylic paint
- Hard plastic or wood ruler
- Flexible ruler
- Mechanical Pencil
- Cardstock
- Scissors
- Small paint brush
- Medium stencil paint brush
- 5-inch doll needle
- Small embroidery needle
- Paper plates
- Paper towels

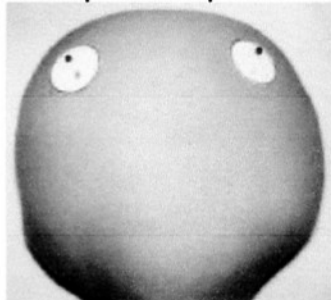
## Instructions:

### Eyes:

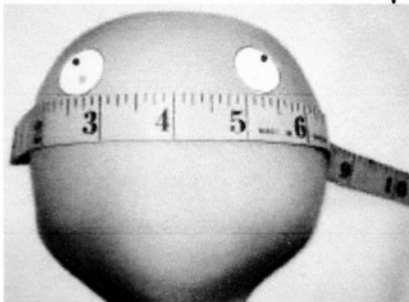
1. Print and cut out eye patterns on cardstock.



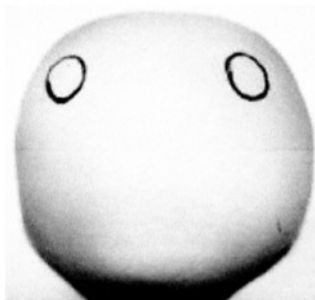
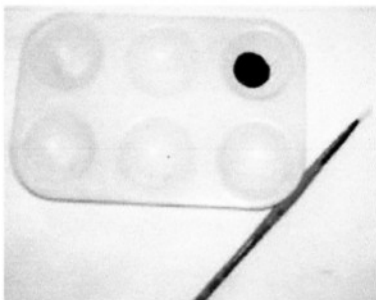
2. Looking at the picture, place eye patterns where you desire on the dolls face and place a few straight pins to keep them in place.



3. With a flexible measuring tape, measure from the side seam to the eye on one side and do the same on the other. Make adjustments to the eyes as necessary until they are both of equal distance from the side seam to the edge of the eyes. Once you have those straight, take the flexible measuring tape and lay it down straight across the face directly underneath the eyes making sure they are straight and even with each other. Tack them in place with straight pins.



4. Using a mechanical pencil, trace outline of eyes. Note: I use a mechanical pencil and recommend it to my customers as it has a finer line than regular #2 pencils. The wider the pencil line, the wider the eye. Using a small paint brush and with your black acrylic paint, very carefully outline the eyes.



5. Then again very carefully paint in the rest of the eye. Let dry.

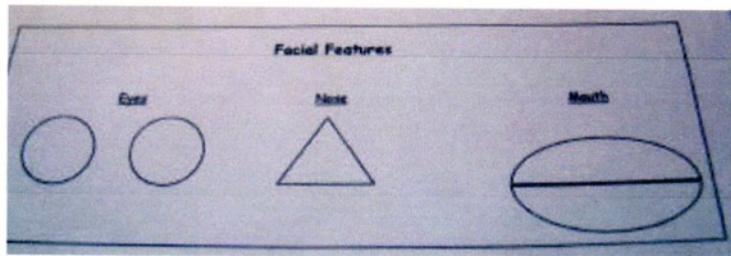


6. With the end of your small paintbrush, dip the very end of the handle lightly in the antique white acrylic paint and very carefully dot in the whites of the eyes.



### Nose:

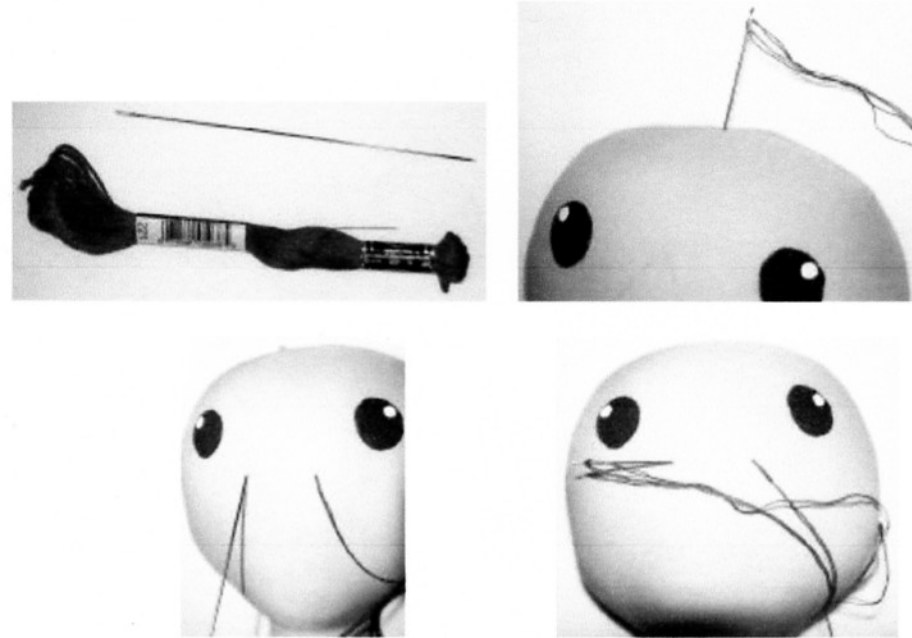
1. Print and cut out the nose pattern on cardstock.



2. Looking at the picture, place nose pattern where you desire on the face and keep it in place with straight pins.



3. Using a mechanical pencil, outline the nose pattern. Thread your 5-inch doll needle with 2 strands of the red embroidery floss. Going in from the very top of the head with your needle (this would be covered with her hair) go all the way down to the bottom of her nose. Now...the 5-inch doll needle is necessary to reach from the top of her head down to the bottom of her nose, but it would be very difficult to try to stitch the nose with this long needle. When I get to the bottom of the nose I remove my embroidery floss from the doll needle and rethread it on a smaller needle.



4. Keeping the stitches very close together, satin stitch the entire nose. In case you're not familiar with a satin stitch, there is an illustration of the satin stitch towards the end of these instructions. When you are at the top of the nose and ready for the last stitch, unthread your embroidery floss from the small needle and rethread on your long 5-inch doll needle. Take the last stitch at the top of the nose and come out at the top of the head again. Tie a knot in the thread and trim floss.

